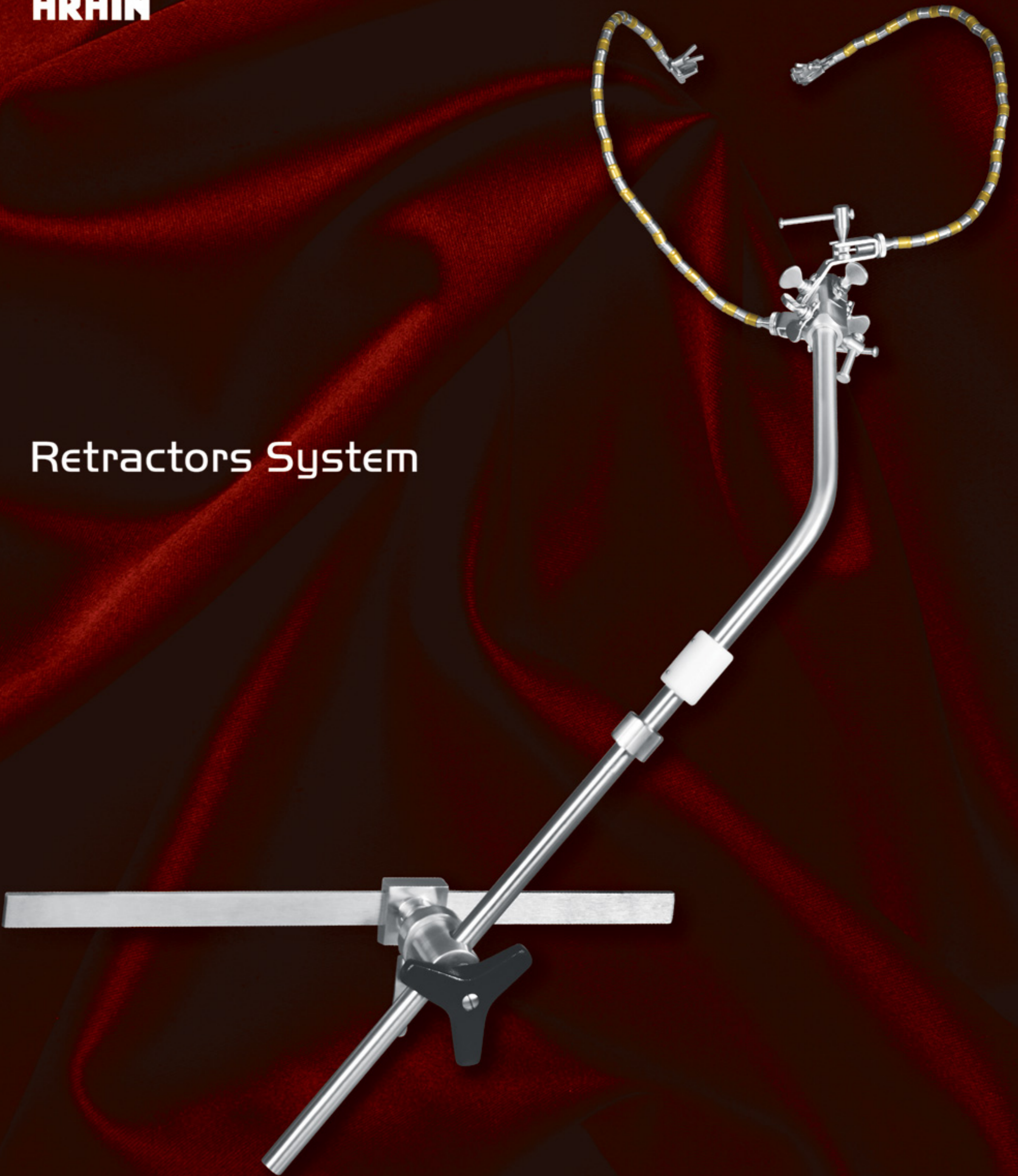




www.m arain.com

Retractors System



HIGH QUALITY INSTRUMENTS
UNRIVALLED SERVICE & EXPERIENCE
EXCELLENT AFTER SALES CARE

M.A. ARAIN & BROTHERS
Taking the pain out of medical procurement

Introduction

M.A.Arain & Brothers (Pvt) Ltd. pursues the 21st century vision of becoming a true global leader who can make its customers worldwide through its quality products and services.

We are dedicated to manufacturing and marketing instruments those provide practical solutions to real life problems, and meet the needs of our customers. We insist on high quality, efficient manufacturing, teamwork, and integrity, growing from our deep respect and honor for God, our employees, our vendors, our customers and all our other stakeholders.

We stand behind every product we offer. Each of us, from the production department to the sales department makes customer satisfaction a top priority.

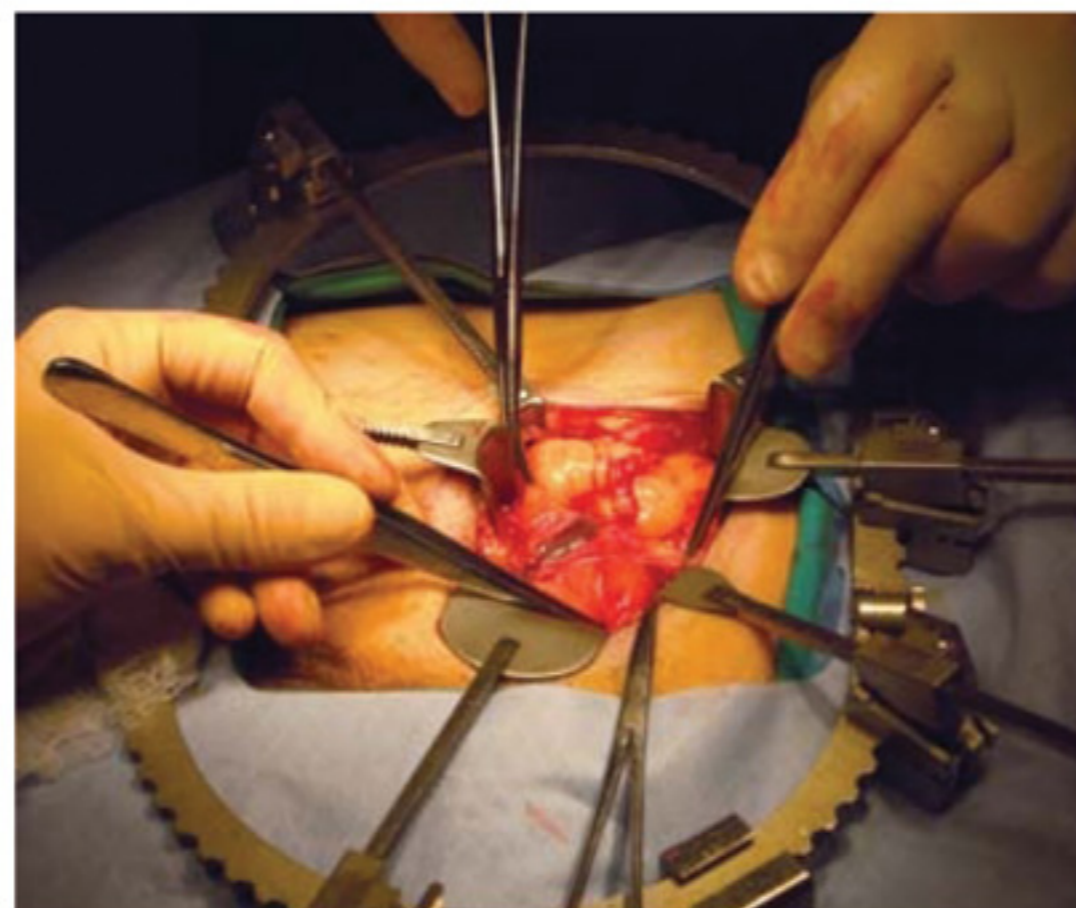
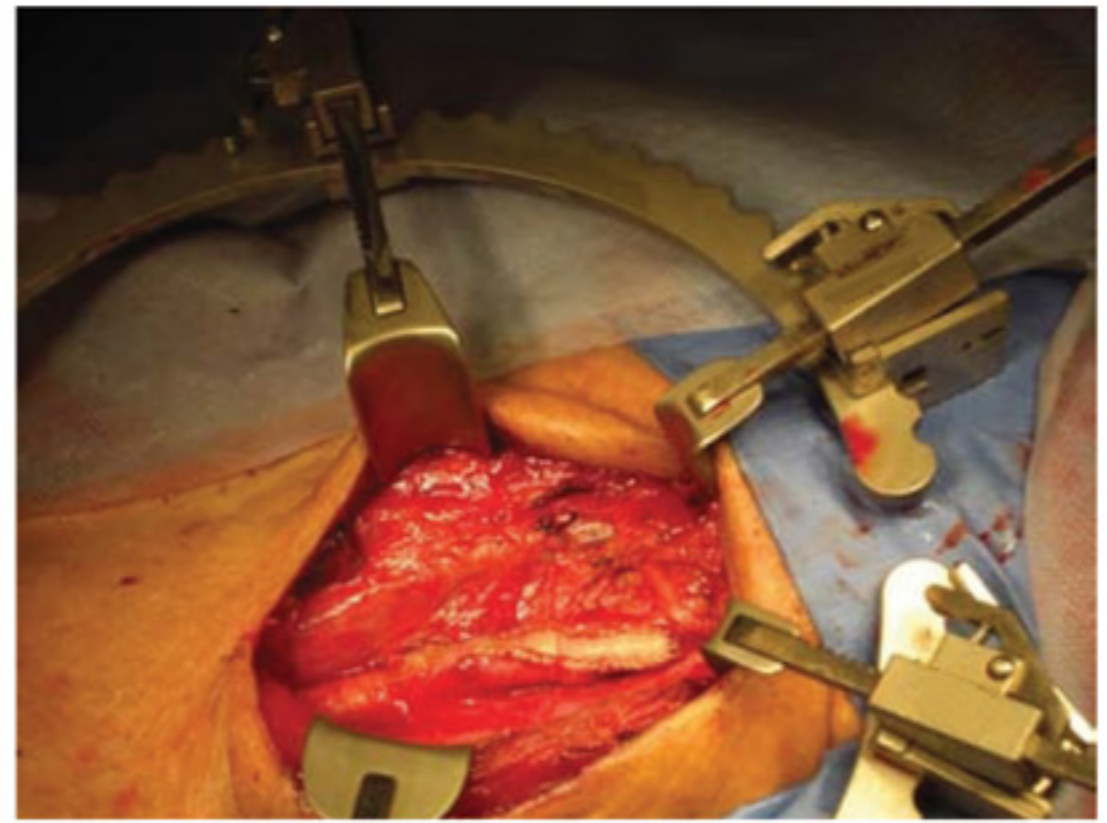
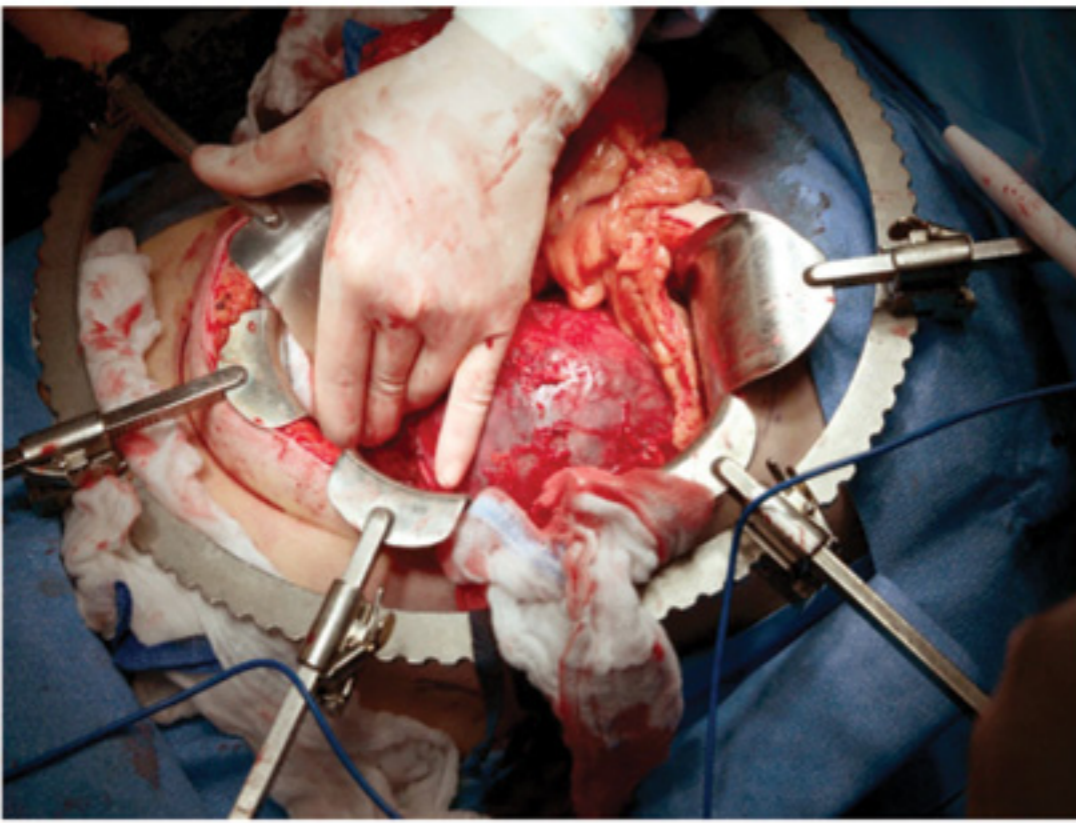
The careful management of people and projects ensures we continue to enjoy our reputation for providing excellent quality services to our customers.

The most important part of our philosophy is to work in partnership with clients and this requires, in our view, direct contact between our clients and us from the word go.

We Aim:

- To listen to our customers and exceed their expectations, ensuring they are completely satisfied with our products, services and support so that they will continue working with us.
- To continue expanding our research programs in progressive technologies.
- To secure international recognition by adopting a global rather than local perspective and by achieving excellence in the quality of our instruments.
- To continue building our excellent team of top professionals through controlled expansion, selective recruitment and by creating an informal and challenging work environment.

Surgery Systems



Brain Surgery System

Leyla Brain Retractor Set
60-1050-00



Leyla Brain Retractor
60-0666-00



Martin Arm
60-1061-00



Flat Spatula
60-1051-00



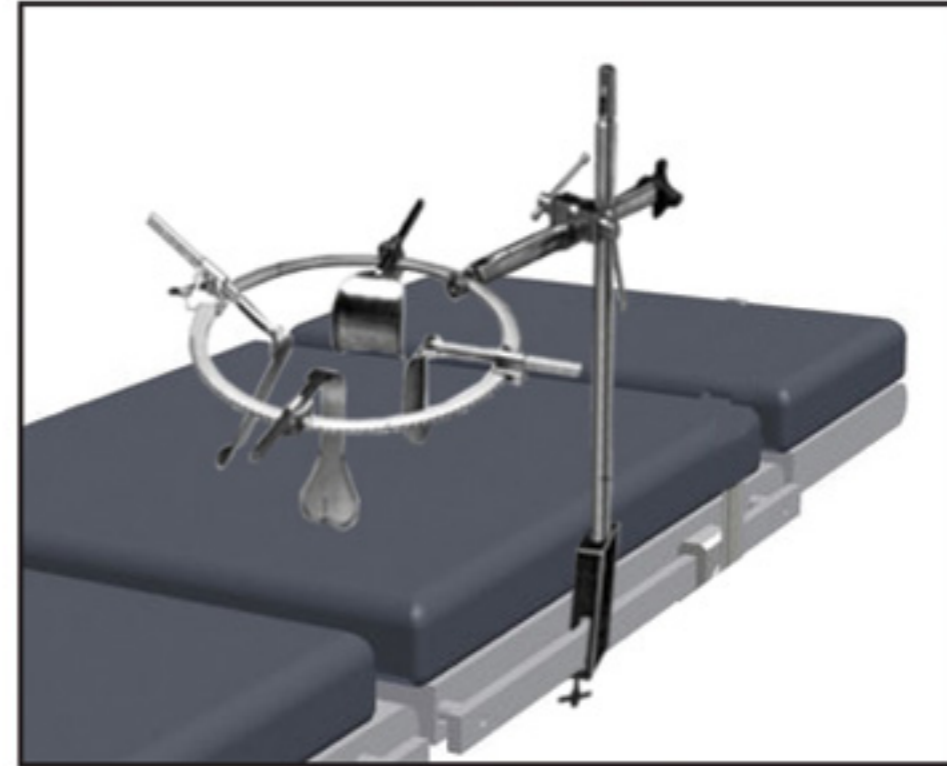
General Surgery System

Specified for a widely used of all the surgery systems. Its special design provides multi-directional surgical site exposure in a wide variety of abdominal procedures.

Easy assembling process an edge to this system over others.

General Surgery System Complete Set 60-1053-00

- 60-1052-00 Field Post, 12"
- 60-1056-00 Horizontal Flex Bar
- 60-1058-00 Post Coupling
- 60-1062-00 Ratchet Mechanism 2 Pcs
- 60-1060-00 Tilt Ratchet mechanism 4 Pcs
- 60-1072-00 Ring, Segmented, medium, 10½" x 19"
- 60-1086-00 Blade, Balfour, 2" 5/8" x 3"
- 60-1086-00 Blade, Kelly, 2" x 3"
- 60-1088-00 Blade, Kelly, 2" x 4"
- 60-1094-00 Blade, Harrington, 1" x 5 5/8"



Accessories



60-1052-00 Field Post, 12"



60-1054-00 Horizontal Bar



60-1086-00 Blade, Kelly, 2" x 3"
60-1088-00 Blade, Kelly, 2" x 4"
60-1090-00 Blade, Kelly, 2" x 5"
60-1092-00 Blade, Kelly, 2" x 6"



60-1058-00 Post Coupling



60-1056-00 Horizontal Flex Bar



60-1062-00 Ratchet Mechanism



60-1060-00 Tilt Ratchet mechanism



60-1094-00 Blade, Harrington,
1" x 5 5/8"



60-1086-00 Blade, Balfour,
2" 5/8" x 3"



60-1070-00 Ring, Oval, medium,
10½" x 14½"
60-1072-00 Ring, Segmented, medium,
10½" x 19"



60-1096-00 Blade, Malleable,
3" x 6"
60-1098-00 Blade, Malleable,
2" x 6"
60-1100-00 Blade, Malleable,
1" ½" x 6"

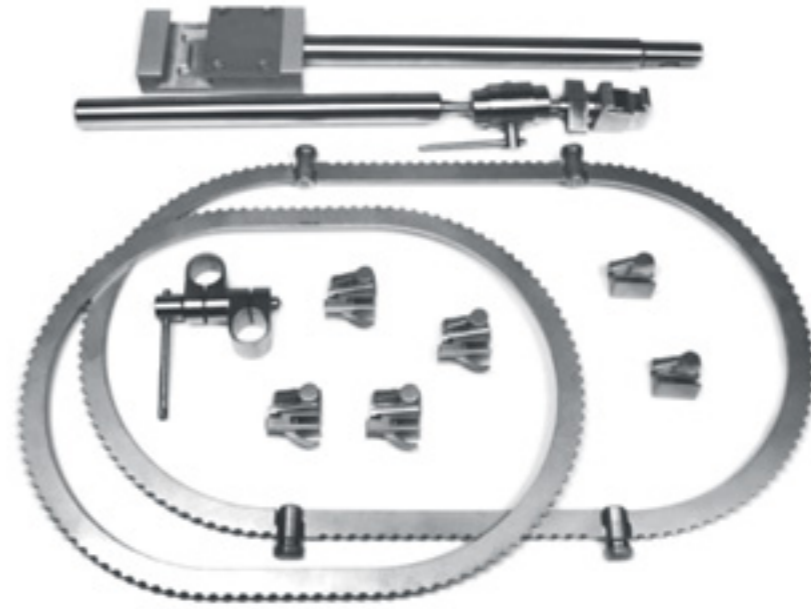


60-1102-00 Blade, Gelpi

Basic Starter System

The General Surgery Basic Starter System is the perfect way to begin a customized table mounted system. It features both a solid and a segmented ring, 12" field post, coupler, a horizontal Flex Bar and six tilt ratchets.

Basic Starter System
Complete Set
60-1055-00



Accessories



60-1052-00 Field Post, 12"



60-1056-00 Horizontal Flex Bar



60-1058-00 Post Coupling



60-1062-00 Ratchet Mechanism



60-1060-00 Tilt Ratchet mechanism



60-1070-00 Ring, Oval, medium,
10½" x 14½"
60-1072-00 Ring, Segmented, medium,
10½" x 19"

Gynecology Surgery System

This System has been used by Gynecologists for many years. It features the notched segment ring. The horizontal flex bar allows for exact positioning, especially if the surgeon approaches from down below.

Gynecology Surgery System
Complete Set
60-1057-00



Accessories



60-1052-00 Field Post, 12"



60-1056-00 Horizontal Flex Bar



60-1058-00 Post Coupling



60-1060-00 Tilt Ratchet mechanism



60-1102-00 Blade Deaver
1x3¹/₂ (2.5 x 7.5) cm
60-1104-00 Blade Deaver
1x5" (2.5 x 12.5) cm



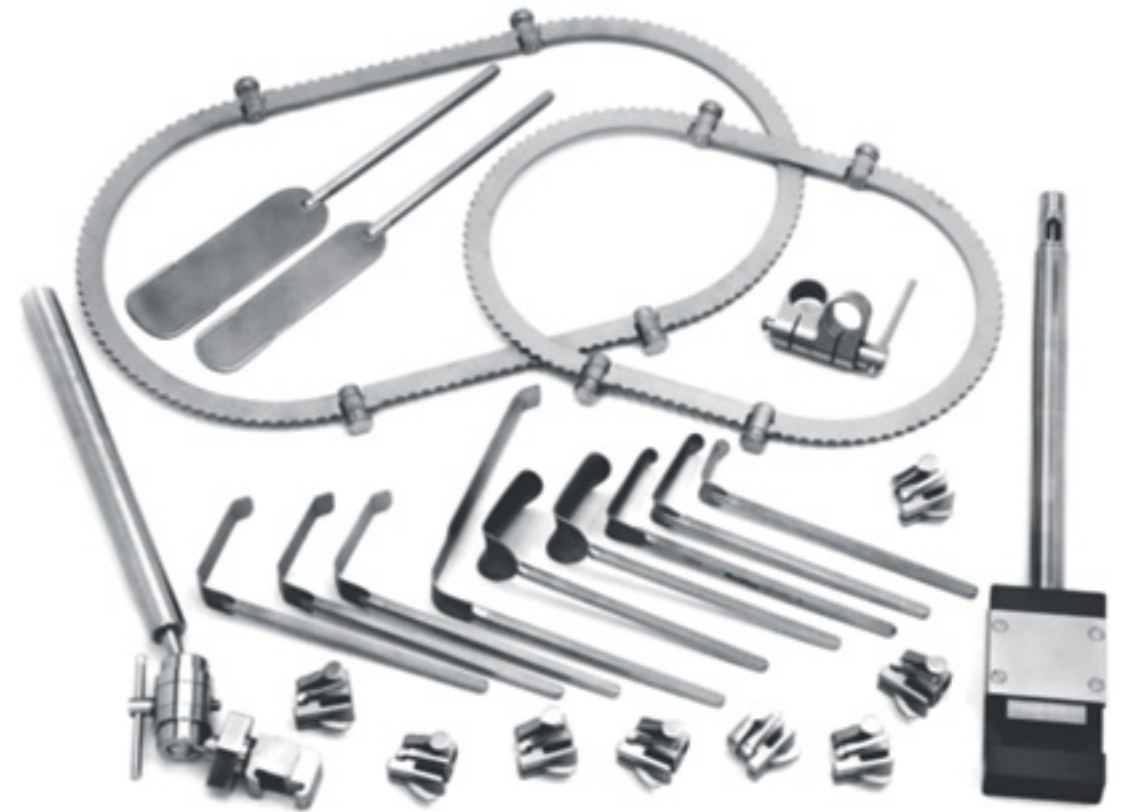
60-1106-00 Blade Vaginal Lateral
1x3¹/₂ (2.5 x 7.5) cm
60-1108-00 Blade Vaginal Lateral
1x4¹/₂ (2.5 x 11.3) cm



601083-00 Ring, Segmented,
medium, 10¹/₂" x 19"

Urology Surgery System

This system is designed for abdominal and flank approaches to the bladder, kidneys, ureters and other structures. The inclusion of 2 segmented rings allows for 8 ring size configurations and virtually unlimited ring angles. This permits the appropriate ring size and shape for virtually any patient, any procedure. Set up generally follows the principals shown for lower midline or pfannenstiel incisions in the general Surgery Section.



**Urology Surgery System Set
Complete Set
60-1059-00**

Accessories



60-1052-00 Field Post, 12"



60-1056-00 Horizontal Flex Bar



60-1058-00 Post Coupling



60-1060-00 Tilt Ratchet mechanism



60-1110-00 Blade, Kelly, 1" x 2½"
60-1112-00 Blade, Kelly, 1" x 1½"
60-1114-00 Blade, Kelly, 2" x 2½"



60-1116-00 Blade Vaginal Lateral
1 x 3"



60-1118-00 Blade, Malleable,
2" x 6"
60-1120-00 Blade, Malleable,
1" ½" x 6"



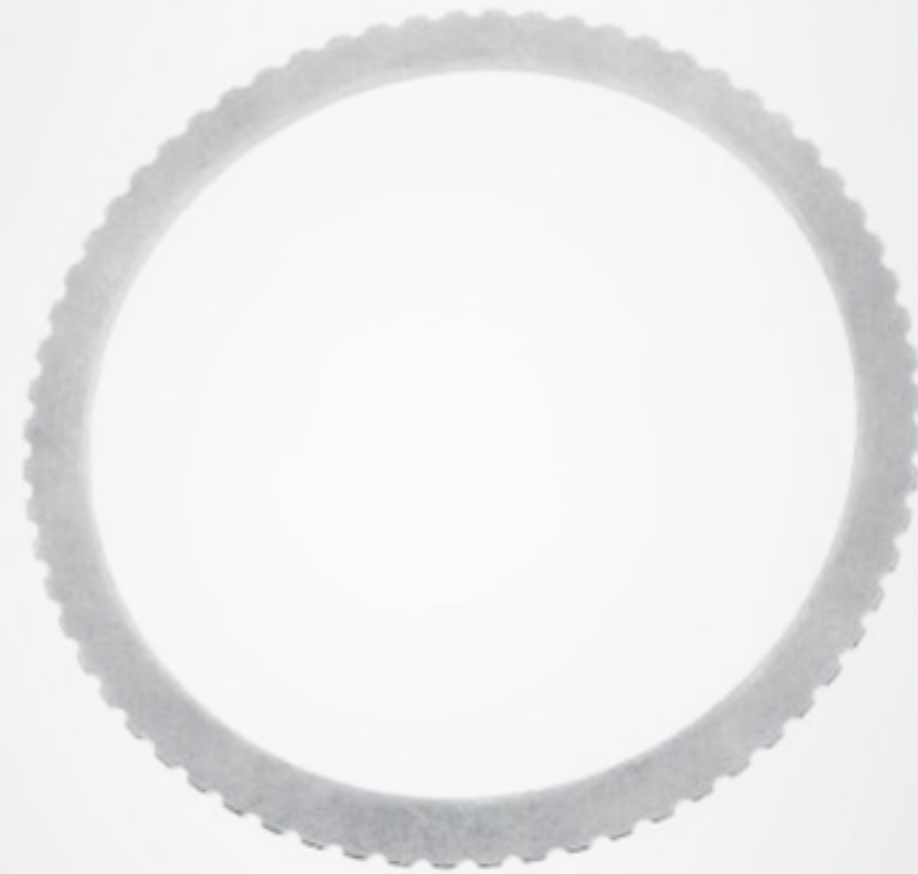
60-1084-00 Ring, Segmented,
8½" x 14"
60-1085-00 Ring, Segmented,
10½" x 19"

Surgery Frames

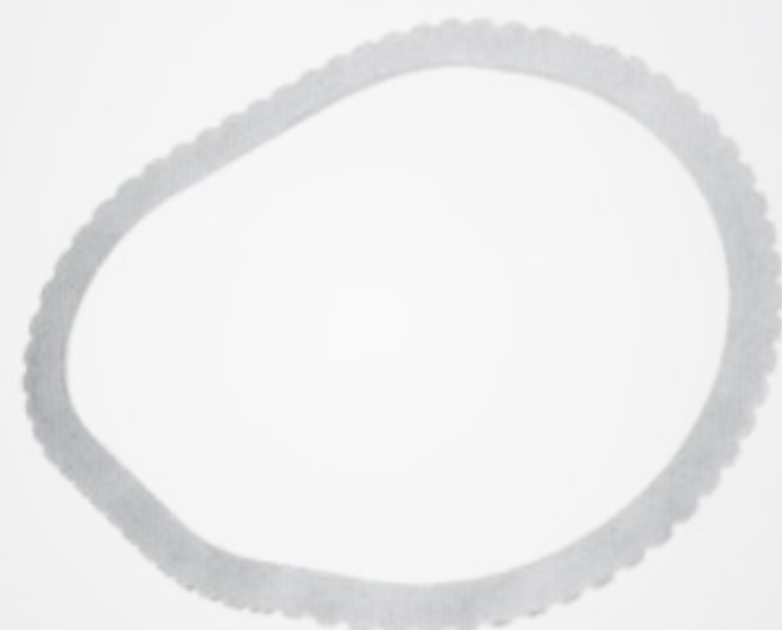
Oval Frame		
60-1074-00	Small	203 x 310 MM
60-1075-00	Medium	265 x 368 MM
60-1076-00	Large	266 x 470 MM



Round Frame		
60-1077-00	Small	Ø 216 mm
60-1078-00	Medium	Ø 266 mm
60-1079-00	Large	Ø 317 mm



Vaginal Frame		
60-1080-00	Small	203 x 310 MM
60-1081-00	Medium	265 x 368 MM
60-1082-00	Large	266 x 470 MM



Retractor Blades



Balfour
60-1126-00 88 x 69 mm



Fence
60-1128-00 100 x 125 mm



Deaver
60-1130-00 17 x 57 mm
60-1132-00 25 x 88 mm



60-1134-00 25 x 125 mm
60-1136-00 75 x 250 mm



Harrington
60-1138-00 25 x 140 x 63 mm
60-1140-00 63 x 140 x 88 mm
60-1142-00 63 x 200 x 88 mm
60-1144-00 88 x 250 x 113 mm



Meyerding - with teeth
60-1146-00 15 x 58 mm
60-1148-00 25 x 83 mm
60-1150-00 50 x 94 mm

Retractor Blades



Richardson
60-1152-00 19 x 25 mm



60-1154-00 19 x 50 mm



60-1156-00 25 x 31 mm



60-1158-00 22 x 97 mm



60-1160-00 25 x 113 mm



60-1162-00 58 x 175 mm

Certified:

ISO 9001 : 2008

ISO 14001 : 2004

ISO 13485 : 2003

cGMP - FDA (USA)

CE 0120



M.A. ARAIN & BROTHERS

Mailing Address:

P.O. Box: 432, Sialkot-Pakistan

Factory:

Wazirabad Road, Sialkot-Pakistan.

Phone: +92 52 4264926 & 4264571

Fax: +92 52 4264759 & 4264026

E-mail: info@maarain.com

URL: www.maarain.com